

NEW HORIZONS

An inspired renovation, with a palette drawn from the scenic surrounds, gives a 1980s home on Sydney's Northern Beaches a fresh outlook.

STORY *Chris Pearson* | PHOTOGRAPHY *Tom Ferguson*

OUTDOOR ENTERTAINING Ceiling in Dulux Natural White Half. Kristalia 'Sushi' dining table, Fanuli. Tribu 'Illum' wenge dining chairs, Cosh Living. 'Esher' large platter in Chalk, Florabelle. Other platter, owners' existing. 'Kubu' rope armchairs and 'Spyros' side table, Outdoor Elegance. Fiandre 'Fjord' floor tiles in Sand, Artedomus.

With jaw-dropping coastal views, it's little wonder the owners of this three-level home on Sydney's Northern Beaches were instantly dazzled when they set eyes on it in 2020. Floor-to-ceiling windows on three sides played up the aspect to the full. And, with the living areas on the top floor also looking into the bush canopy, the getaway felt like an upmarket treehouse.

But the empty nesters, with three children now in their twenties, were less enamoured of the 1980s home that hugged the north-facing hillside peppered with palms and eucalypts. Their priority was to enlist Mark Korgul of Watershed Architects, who in turn recommended Sarah Marriott of SJS Interior Design to bring the house into the 21st century while addressing its functional faults. The most glaring misstep, says the owner, was the separate kitchen and dining areas on the top floor, with the dining area divorced from the balconies, arrangements clearly unpalatable for a keen entertainer and cook.

"It was tired and of its time," adds Sarah, alluding to its curved balconies and red beech timbers. "And it was too bright and shiny - you needed sunglasses indoors." But the proverbial bones were good, including a lift, ensuring the home's adaptability for what the couple sees as their forever home, to be enjoyed by future generations, too.

"The brief was for a contemporary coastal home with hard-wearing and fuss-free materials," says the owner. "A key element was to open up the kitchen and dining room to create an open plan and a larger open kitchen at the heart of the home. We wanted to optimise the fabulous views, but it had to be relaxed and comfortable, and sit well in its natural surroundings, making you feel like you were always on holiday. Our inspiration was the coastal resorts and holiday homes that we had stayed in."

Keeping within the footprint, Watershed Architects' design squared off the balconies, increasing the floor area,

helped by shaving space off the living room so the main balcony, equipped with a barbecue, has become a hub for alfresco entertaining. Mark included a cut-out in the roof with a sliding opening to let in light and shut out the weather when required. Meanwhile, he swapped the kitchen with the dining area and removed a wall between, so both rooms now enjoy a seamless flow to the new enlarged outdoors, the connection enhanced by larger floor-to-ceiling sliders. All the bathrooms were refreshed, while the main bedroom was reconfigured with a larger walk-in robe.

Sarah did not have to look far for inspiration for her interior palette. The natural hues, punctuated by pops of colour, echoing the spectacular views, were expressed in carefully chosen stone - the island bench is a standout - chalky oak, terrazzo and porcelain tiles.

"The terrazzo in the entry and the ensuite [reference] the beach, sand and ocean," says Sarah. While most walls are painted crisp white, in the downstairs rumpus, pale aquamarine walls and ceiling are cossetting. "We had lots of fun with this space by introducing more playfulness and incorporating a quirky bar table," says the owner. Sarah didn't play it straight. "As it was a boxy house, I added curves, but not in an OTT way." This included curved joinery, with concave insets in the kitchen island.

Furniture consists of originals from the owner - such as the solid coffee table - complemented by chunky seating. "The furniture needed playfulness, with holiday vibes - nothing too serious," says Sarah. In that living room, too, versatile swivel armchairs enable the occupants to always be part of the action, whether it's indoors or out.

"We love everything, down to the tiniest design details, which work together to create a calming and casual, but layered ambience," says the owner. "From the moment we walk in, we feel we are on holiday." ▶

Watershed Architects: watershedarchitects.com.au.

SJS Design: sjsinteriordesign.com.au.

Venture Construction: ventureconstruction.com.au.

“Everything works to create a calming but layered ambience.”

OWNER

EXTERIOR Bricks painted Resene Bokara Grey. Vulcan cladding in Nero, Abodo. Aluminium windows, in Black Ace finish, Alspec. **LIVING** Walls painted Dulux Natural White Half. Curtains in Zepel 'Allusion Limestone' fabric, Ozshade. Custom 'Tibetan' rug, The Rug Establishment. 'Bosko' sofa and 'Joy' swivel chairs, Jordan. 'Judd' armchairs in Toffee velvet, MCM House. Custom coffee tables and side tables. Blue abstract artwork by Andrea Newton. 'Claude' side table and white 'Alfred' and 'Darcy' vases, all McMullin & Co. 'Flindt 220' floor lamp, Louis Poulsen. 'Randel' oval dish and 'Runi' long dish in Antique Brass, Horgans. Celestite cluster crystal and Citrine Points crystal, both Simply Gems. 'Petal' vase by With Hands Studio, Artifex Interiors.



Styling by SJS Design.

KITCHEN Joinery in Vibrant Oak Grey Wash veneer, George Fethers & Co. Custom hardware and bench in Stainless Steel, Debrich Custom Joinery. Island benchtop and splashback in Super Grey quartzite, Worldstone. 'Piketto Mosaics' tiles on rangehood, Surface Gallery. Franke Mythos undermount sink, Zip Hydro tap, V-Zug Combi steam oven, black glass oven, and cooktop, all Winning Appliances. 'Yokato' kitchen mixer, Brodware.



“The brief was for a contemporary coastal home with hard-wearing and fuss-free materials.” OWNER



DINING Above Molteni 'Asterias' dining table, Salbini. 'Diiva' barstools, Grazia & Co. 'Kai 42' dining chairs, Great Dane. Intralux 'Kove LED Zed' wall light, FOS Lighting. 'Terra 2' wall light, Marz Designs. 'Ollo' pendant, Suktas. Custom rug, The Rug Establishment. **NOOK** Below right Custom bench seat, in Unique Fabrics Chivasso 'Feel Free' fabric, and Westbury 'Vintage Linen' fabric, by Jade Upholstery. 'Tig' side table, Jordan. 'Monte' lumbar cushion, 'Pampa' and 'Boucle Ball' cushion, Life Interiors. **KITCHEN** Opposite and below left Joinery in Vibrant Oak Grey Wash veneer, George Fethers & Co. Custom hardware and bench in stainless steel, Debrich Custom Joinery. Island benchtop and splashback in Super Grey quartzite, Worldstone. 'Piketto Mosaics' tiles on rangehood, Surface Gallery. Mona pedestal in Sage, L&M Home. 'Fjord Sand' floor tiles, Artedomus.



THE PALETTE

Porter's Paints Newport Blue
(rumpus walls and ceiling)

Dulux Natural White
(internal walls)

Resene Bokara Grey
(exterior)

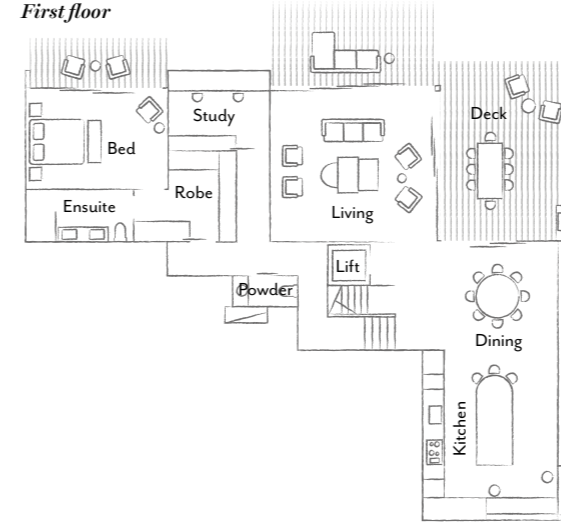
RUMPUS Flooring in 'Ground' timber, Made by Storey. 'UFO' pendants, in Off White and Rose Brown, Tigmi Trading. Plinth in glazed brick eggshell tiles, Elephant Brick Company. Joinery in Polytec Ravine Maison Oak laminate and painted Porter's Paints Newport Blue, Debrich Custom Joinery. Custom 'Monte' rug in Dusty Peach and Natural White, Pampa. 'Thursday' sofa and 'Molly' coffee table, both Jordan. OUTDOOR 'Seti' outdoor sofa and armchairs, Robert Plumb. Custom coffee table. Flooring in blackbutt.

Paint colours are reproduced as printing processes allow.

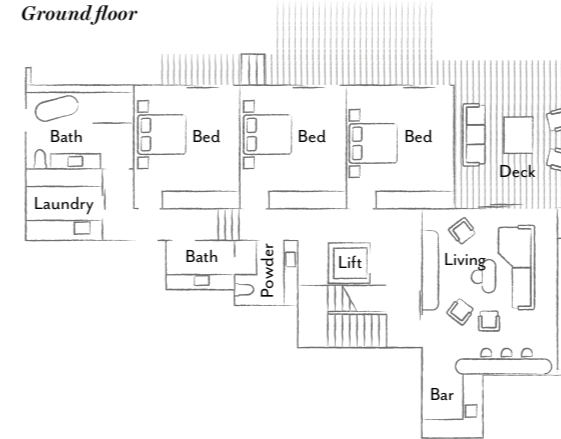


THE LAYOUT

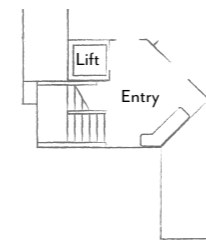
First floor



Ground floor



Lower Ground floor



MAIN BEDROOM *Top* Curtains in Zepel 'Allusion Limestone' fabric, Ozshade. Custom bedhead, Venture Construction. *Hold Me As I Breathe* artwork by Natalie Uhrig. 'Barbary' custom rug, The Rug Establishment. 'Coco' bedside table, Artifex. **POWDER ROOM** *Bottom* Vanity in Emerald Haze quartzite, CDK Stone. Studio Bagno 'Soul 2' basin and Brodware 'City Stik' tapware, both Candana. Neutra wall mosaics, Di Lorenzo Tiles. 'Yezze' mirror, MCM House. **MAIN BATHROOM** *Opposite* Mutina tiles, Artedomus. 'Fleck' mosaic and 'Tesoro' tile, both Surface Gallery. Victoria + Albert 'Mozzano 2' bath and Brodware 'City Stik' bath mixer with handshower, showerhead, handshower and mixer, all Candana. 'Pedestal' side table, Bonnie and Neil.

THIS IS THE LIFE

The owners spend most of their time in the new kitchen-dining space, which flows onto a large deck. "The kitchen has become the heart of the home, with many options for gathering, not only at the island but also on the window seats, a great place to enjoy a cup of tea in the morning sun," says one of the owners. When friends or family stay, the playful second living room springs into action.



OUTDOOR ENTERTAINING Kristalia 'Sushi' dining table, Fanuli. Tribu 'Illum' wenge dining chairs, Cosh Living. 'Kubu' rope armchairs and 'Spyros' side table, Outdoor Elegance. Fiandre 'Fjord' floor tiles in Sand, Artedomus.



1

THE SOURCE

Give coastal interiors a luxe lift selecting pieces with clean lines and soft edges, and accents of subtle aqua and olive.



Produced by Andrea Healy.

1 Nelson Saucer Crisscross Bubble pendant light, \$900, Living Edge. 2 Samsung 8kg front load washing machine, \$799, Harvey Norman. 3 'Kartio' highball glasses (400ml) in Aqua, \$54.95/two, Iittala. 4 'Terra O Long' articulating wall light in Olive, from \$883, Marz Designs. 5 Middle of Nowhere 'Pebble' mirror (150x90cm) in Black, \$785, Life Interiors. 6 'Diponto' etched ceramic serving plate, \$440, Alex and Trahanas. 7 Kartell 'Stripes' outdoor cushion, \$350, Space Furniture. 8 Moooi 'Container' table, \$3430, Space. 9 'Igy' dining chair in Navy, \$310, GlobeWest. 10 'Maya' table lamp in Sea Grass, \$159, Few & Far. 11 'Plaza' three-and-a-half-seater fabric sofa with chaise, \$3999, Harvey Norman. **H&G**